

# Pocket Genealogist Installation Guide

## *Before Installation*

### **New User**

Microsoft ActiveSync must be installed and a connection established between your primary computer and device prior to installation of Pocket Genealogist. ActiveSync is provided on a CD that came with your device. You may also download the latest version from the internet. A link can be found in the download area on the Northern Hills Software website.

### **Existing User**

Databases created with versions of Pocket Genealogist prior to 2.71 are not compatible with Version 2.94. If you have version 2.50 or newer of Pocket Genealogist already installed, you can simply install 2.94 over the top of that version. For versions prior to version 2.50, it is recommended that you delete your databases and uninstall Pocket Genealogist. Make note of your registration code and any customization settings before you uninstall as you will need to reconfigure with the new version. Your registration code can be found on the Pocket Genealogist “About” screen.

See Appendix A in the User Guide for more details regarding uninstall.

## ***Installation of 2.94***

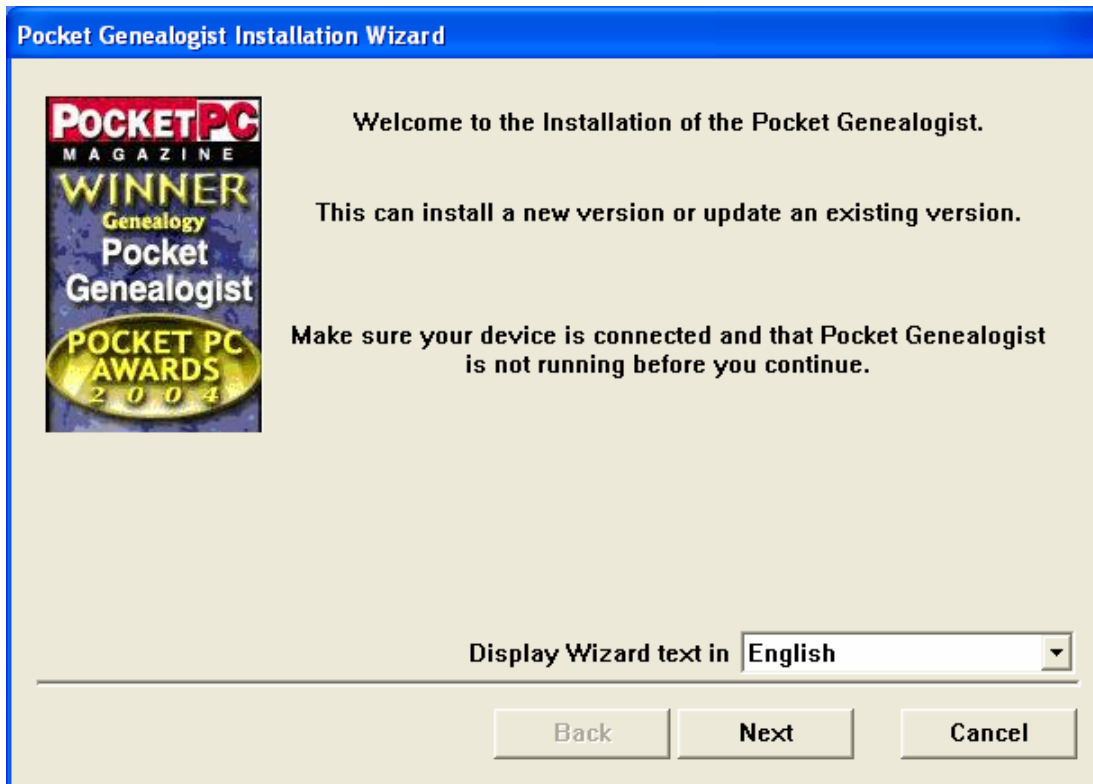
Start by downloading the setup file from the Northern Hills Software website. There are several different types. Choose the one that’s correct for your device. Any previous versions of Pocket Genealogist must not be running on the desktop or the device during installation. Microsoft ActiveSync must be installed and a connection established between the device and your desktop/laptop computer. Make sure your device is connected before you run the Pocket Genealogist installation program. If you are installing on Windows NT, 2000, or XP you must have administrator privileges to install the program.

There are two distinct steps to the installation which are invoked by running the installation program that you downloaded. The first step will install the desktop component of Pocket Genealogist. The second step will install Pocket Genealogist on your device. Both steps are accomplished by running the single installation program.

**Note:** If you need to re-install Pocket Genealogist on the device only, you still need to run the full install.

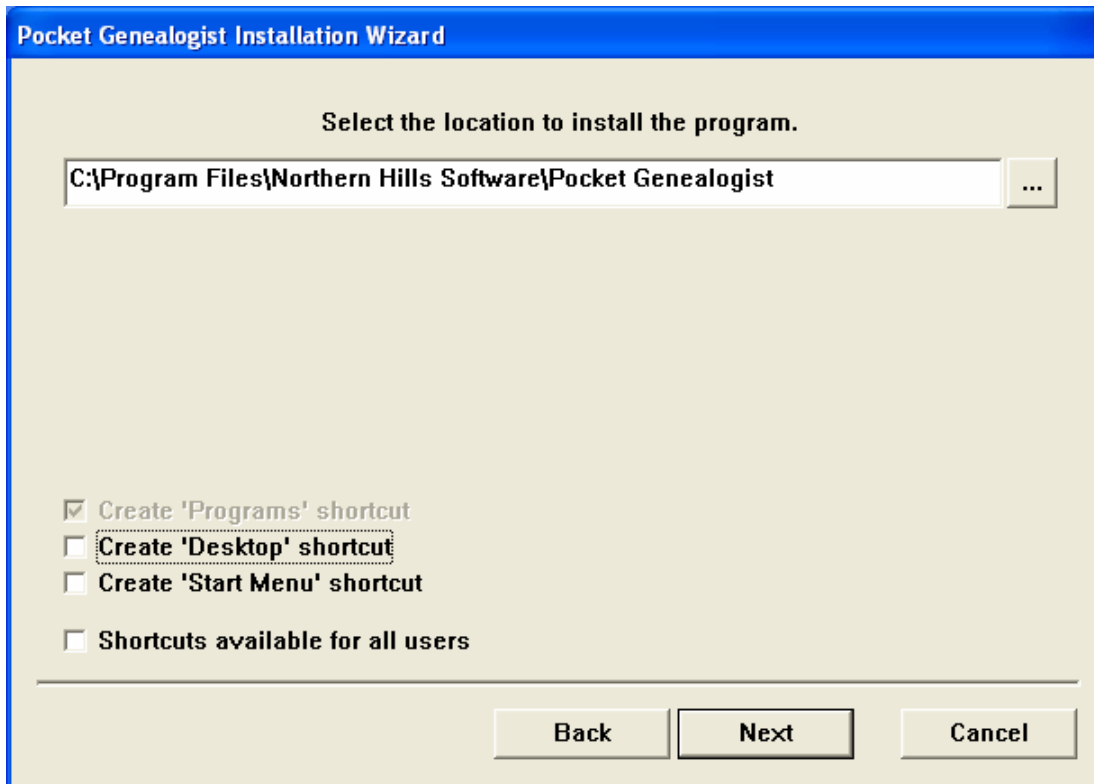
### **Running the Installation program**

Start the installation by clicking on the program setup file that you downloaded from the Northern Hills Software website.



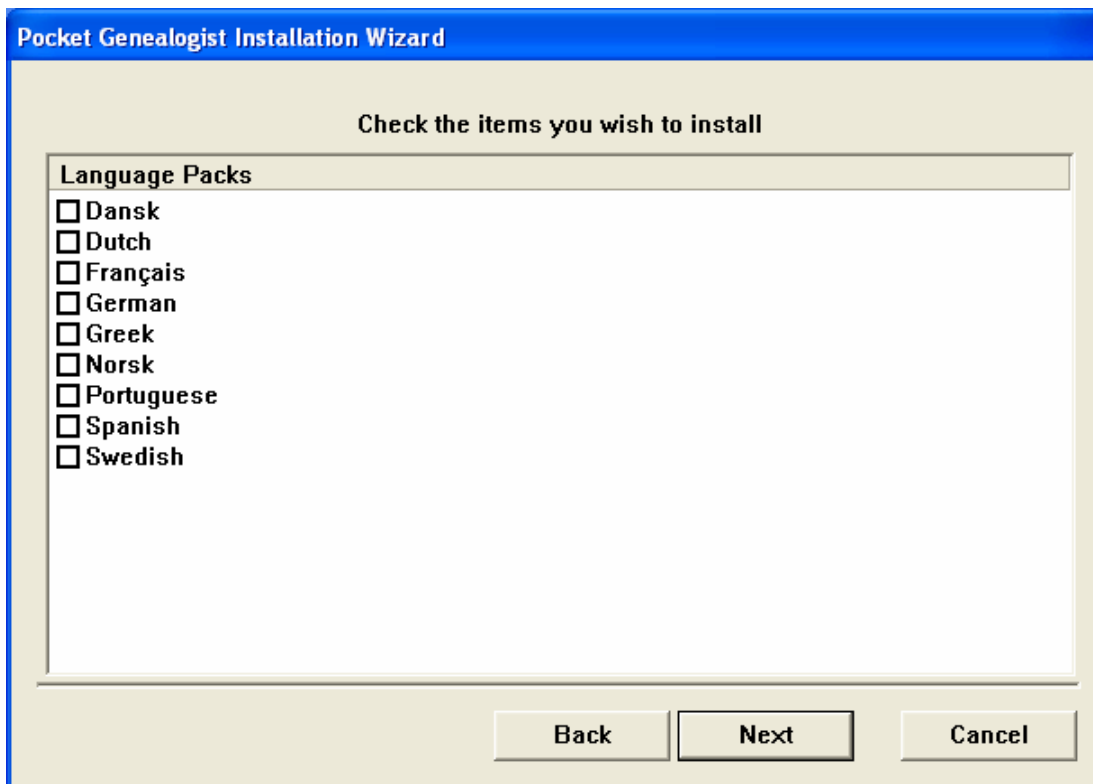
The first panel allows you to select which language you wish to use for the installation wizard display. The installation program will automatically try to select the correct language based on the value set in "Regional Settings" on your computer.

Press "Next" to continue.



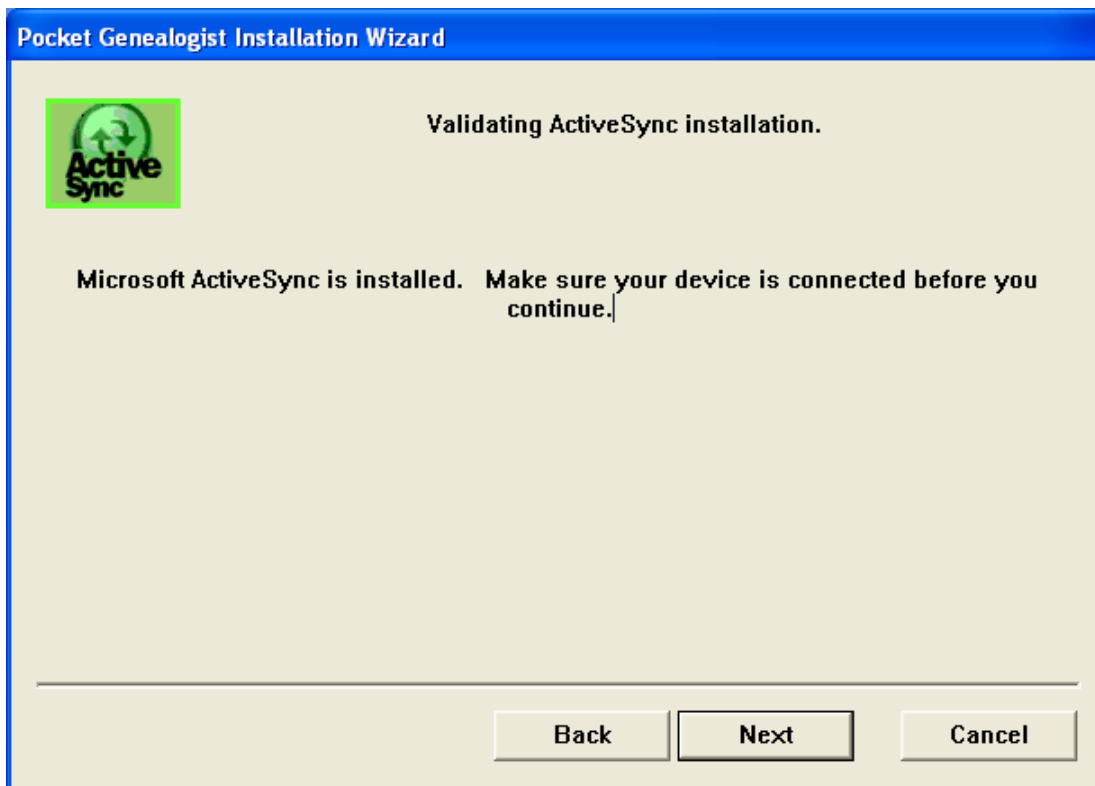
If this is a new installation, you can select where to install the program. Use the “...” button to select the location using the standard windows “Browse for Folder” dialog. A shortcut for Pocket Genealogist is always placed in the Programs menu. You can also select to have a shortcut placed on your desktop or on the start menu. If you have Windows NT, 2000 or XP, you can also decide if the shortcut is available for the current user only or for all users.

Press “Next” to continue.



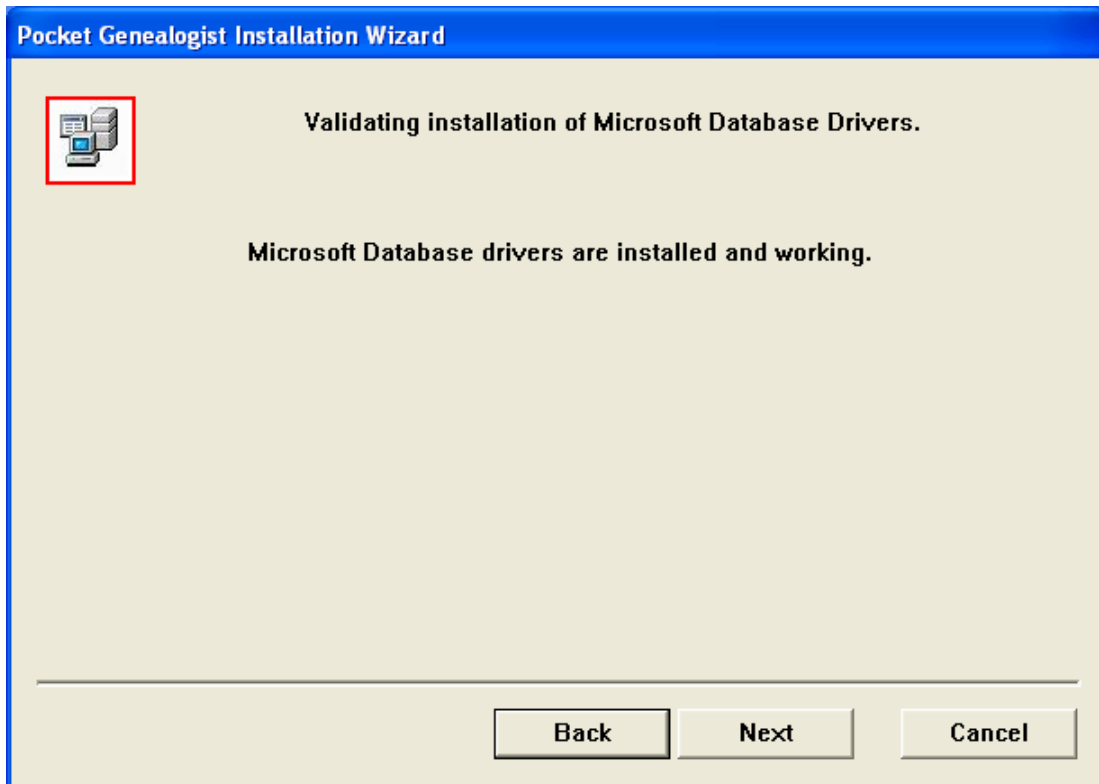
The next panel allows you to select which languages to install. You can select any or all by “checking” the box next to the languages. If one of the listed languages match the “Regional Settings” value on your computer, it will automatically be selected for installation.

Press “Next” to continue.



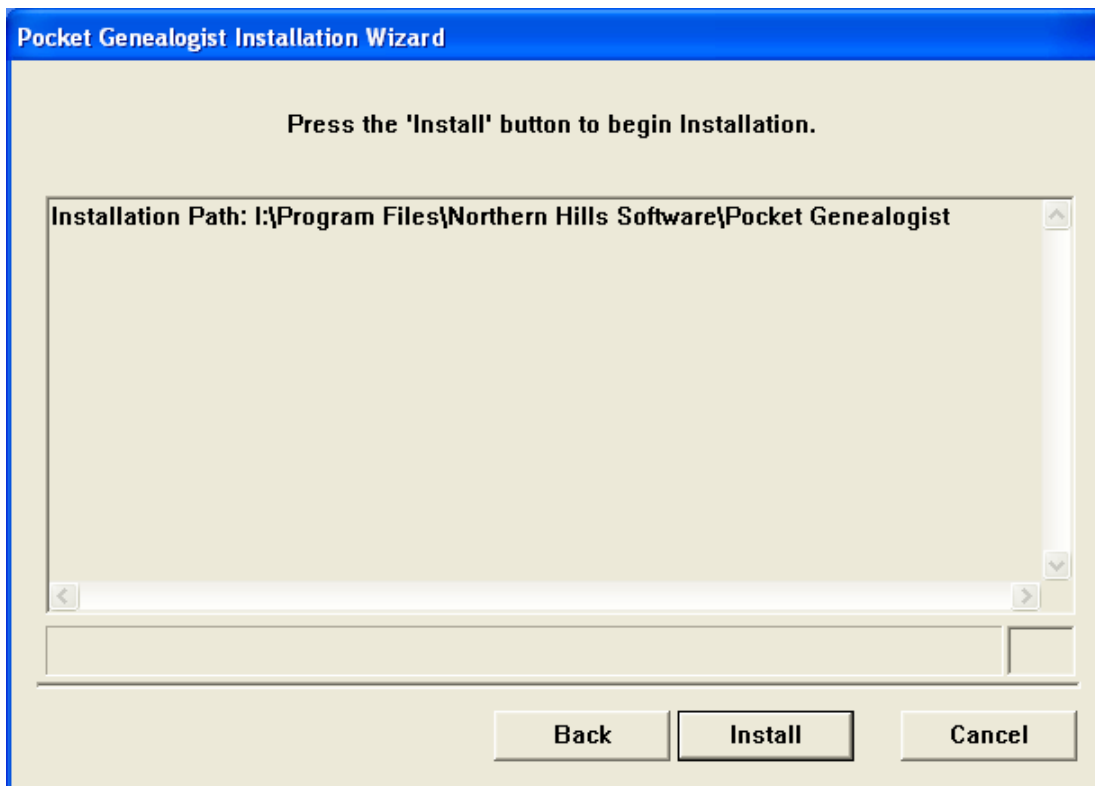
The next panel verifies that ActiveSync is installed. If it is not you will be shown a “Web” button which can be pressed to take you to the ActiveSync download. (An internet connection must be present for the button to work.) You can continue to install without ActiveSync present BUT the device side of Pocket Genealogist will not be installed.

Press “Next” to continue.



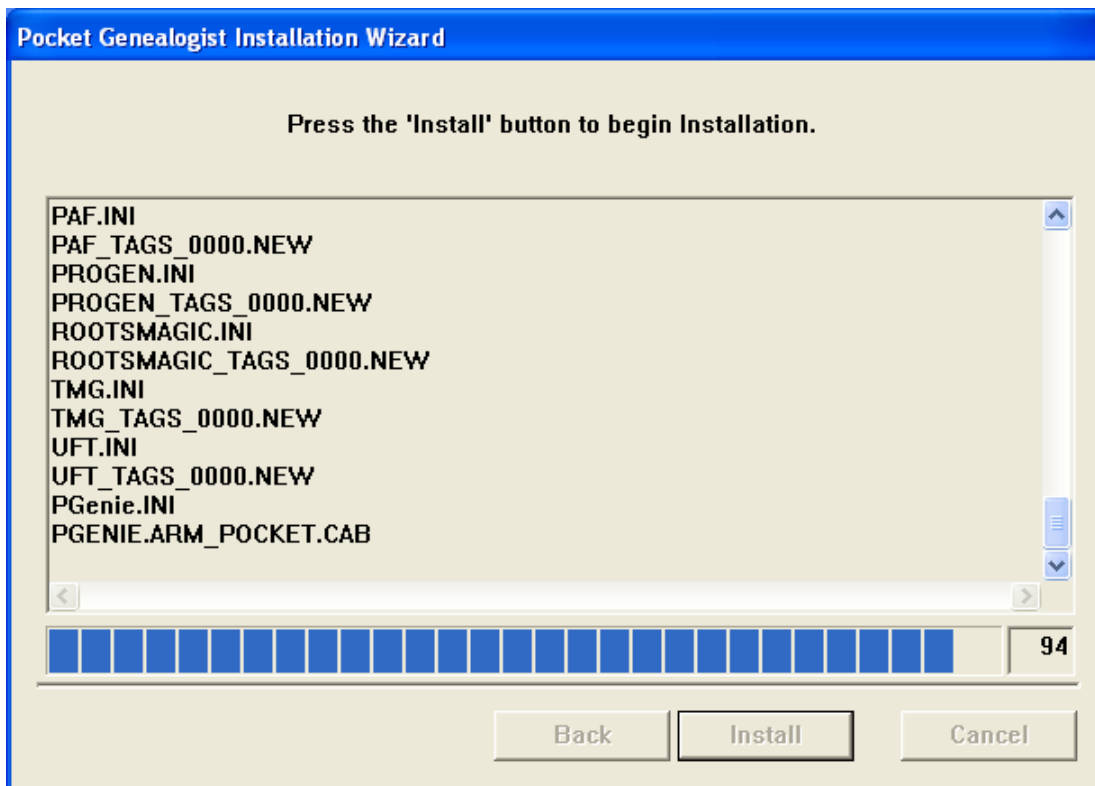
The next panel verifies that the Microsoft database drivers needed for Pocket Genealogist operation are present and working. There are two different set of drivers, one of which is mandatory, and the other only if you are doing “Direct” RootsMagic or The Master Genealogist imports. The messages will let you know if either are missing. A “Web” button will be displayed to allow download of the driver if necessary.

Press “Next” to continue.

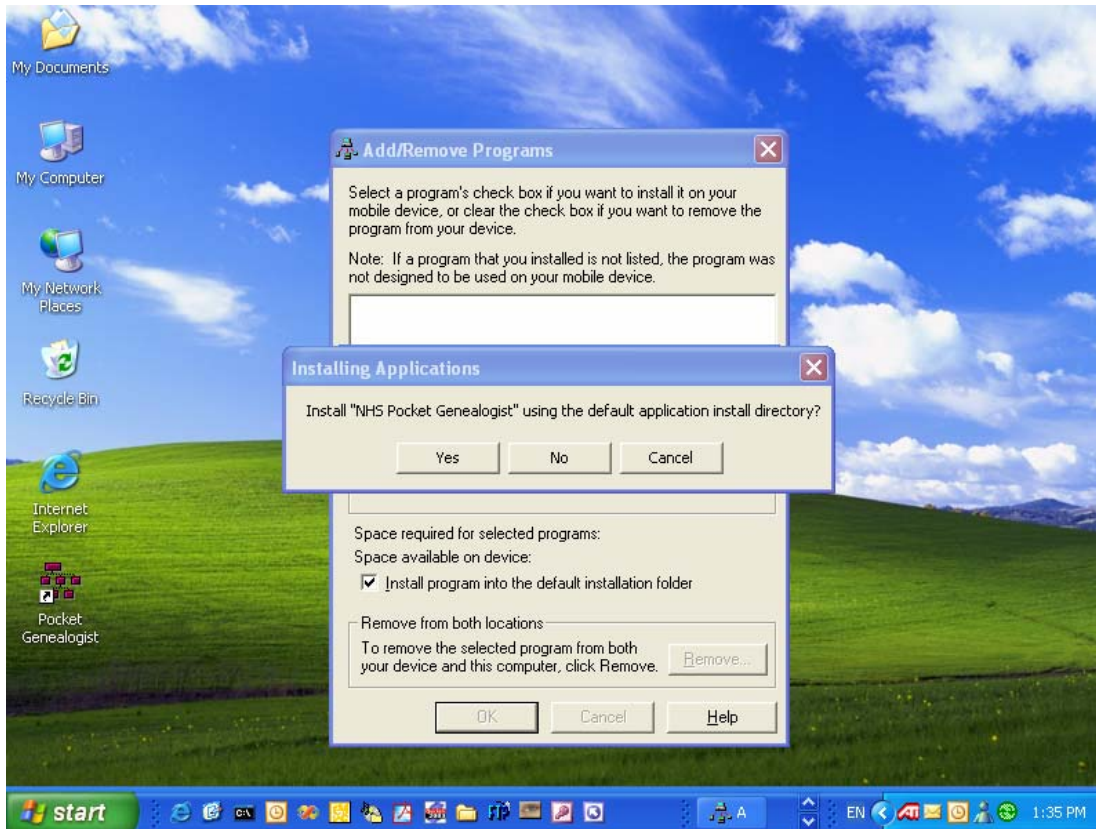


The next panel will show you which options will be installed. (No languages were selected so only the base system will be installed in this example.)

Press "Install" to start the installation.



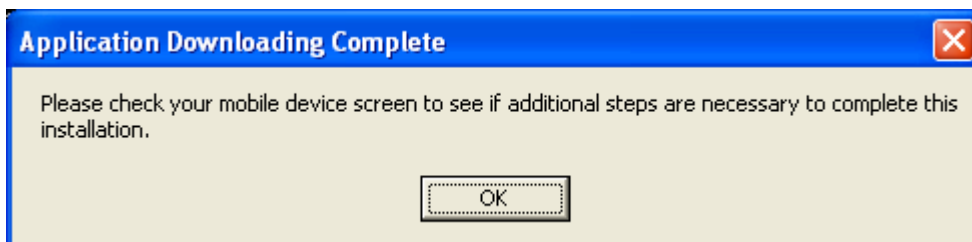
The next panel shows the progress of the installation and displays the files that are copied to your computer. After the desktop side is complete, you'll receive the ActiveSync installation panel for the 'base' Pocket Genealogist installation (as shown on the next page).



If you wish to install Pocket Genealogist to device “memory”, select “Yes”. If you wish to install Pocket Genealogist to an external storage card (if available), select “No”. Selecting “No” gives you a “Select Destination Media” screen similar to the illustration to the right. (The arrow in the drop down list has been selected for this screen print)



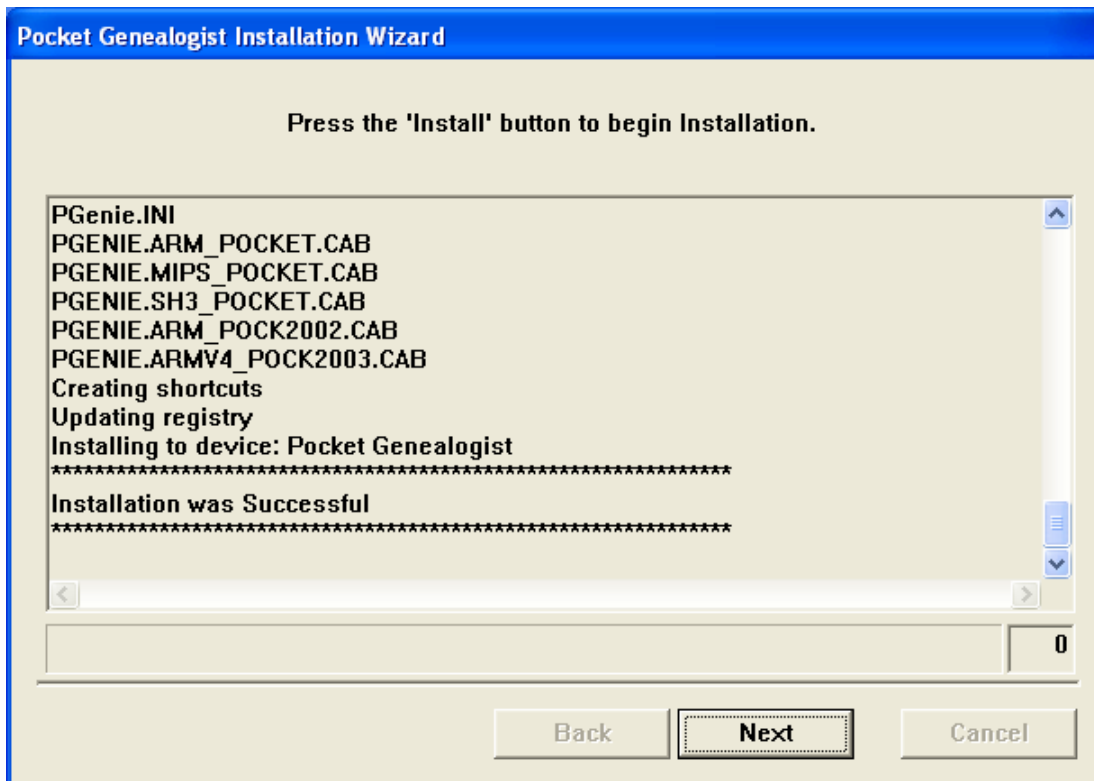
After installation, you will receive the following message:



If this was a re-install, you will be prompted on the device. If this was a fresh install, there will be no messages.

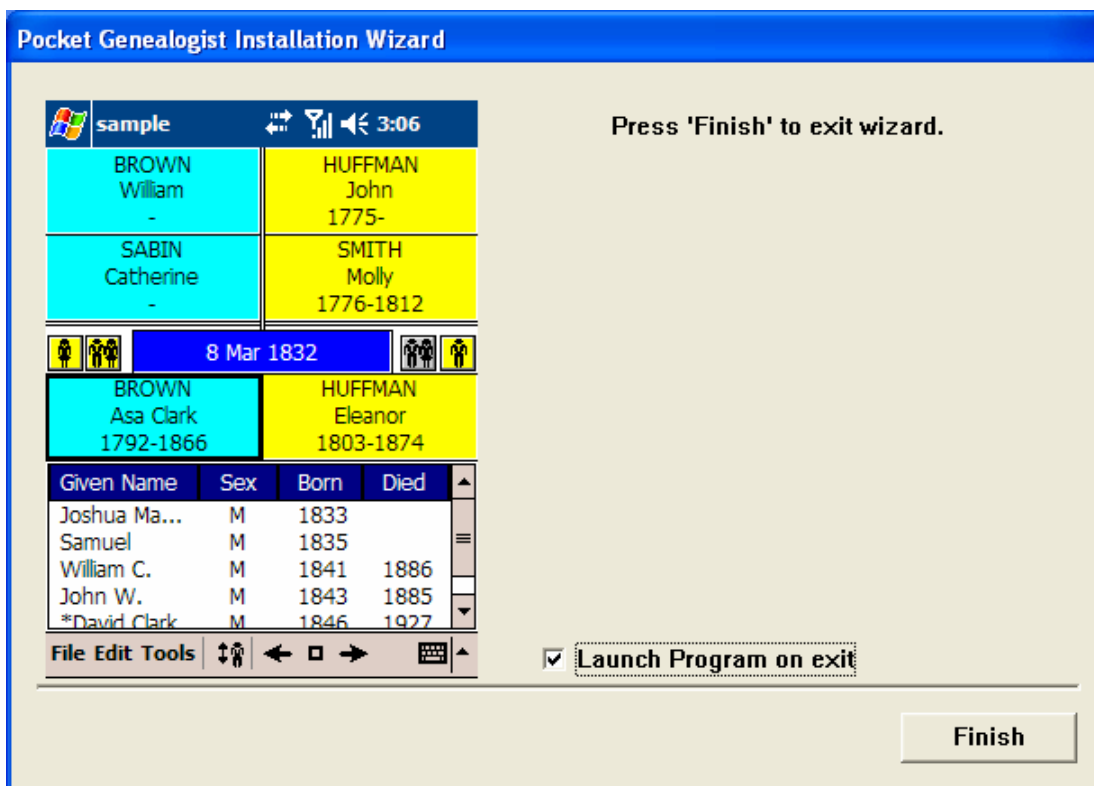
If you have selected one or more languages to install, you will see the device “Add/Remove Programs” dialog for each language selected.

**Note:** If this is a re-install and you are installing languages, you **MUST** respond to the prompts on the device before you press “OK” on the desktop. Otherwise you will get errors from ActiveSync during the install of the languages. In this situation, you may wish to turn off your device and “buffer” the installs which will occur the next time you connect the device.



When the installation is complete, a success or failure message will be displayed in the window.

Press “Next” to continue.



This is the final panel that will be displayed. Pocket Genealogist will automatically be started unless you uncheck the “Launch Program on exit” option.

Press “Finish” to exit the wizard.

Next, download the full User Guide from the Northern Hills Software website. The User Guide contains these installation instructions, plus further information on setup, creating databases, synchronizing, and other Pocket Genealogist functions.

User Guide :

[www.NorthernHillsSoftware.com/documents.htm](http://www.NorthernHillsSoftware.com/documents.htm)